

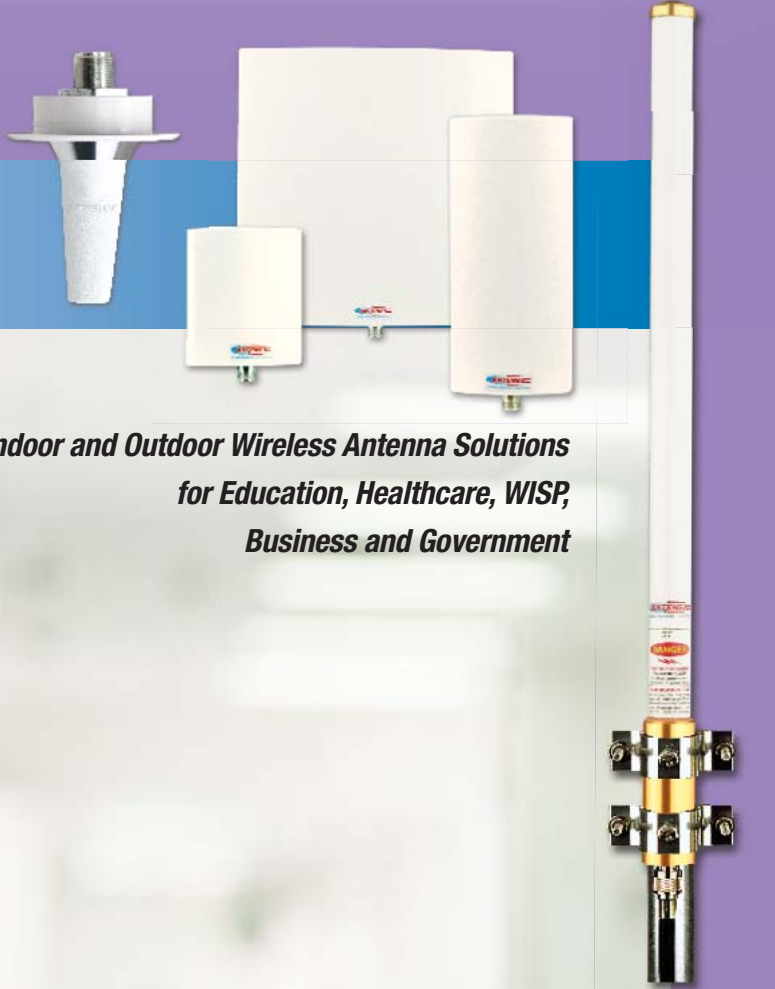
TM

ANTENEX[®]

INC.

Antenex Wi-Fi Solutions

WiFi



*Indoor and Outdoor Wireless Antenna Solutions
for Education, Healthcare, WISP,
Business and Government*





Ceiling Tile Mount
ETRA24003CM

"L Bracket" Wall Mount
ETRA24003WM



Desktop Version
ETRA24003DTM

Phantom® Elite™ range extender antenna improves wireless network distance, signal and performance

The new Phantom® Elite™ antenna operating at 2.4GHz supports the 802.11B, IEEE Wireless LAN standard. With the Antenex ceiling mount adapter the Phantom® Elite™ antenna boosts your wireless signal strength from 2dBi (standard) to 3dB MEG (Mean Effective Gain). A significant problem with many wireless networks is the poor coverage area of standard wireless network products. Antenex solves this problem with the patented field diversity Phantom® Elite™ antenna that attaches directly to the external antenna connector of your wireless access point or wireless network router.

The Phantom® Elite™ antenna is the perfect solution for extending wireless LAN coverage in the office, conference rooms, warehouses, public places, retail locations or at home. The antenna has been specifically designed for easy installation in a matter of seconds. Simply connect the Phantom® Elite™ antenna to your existing access point and mount it easily in an acoustical ceiling tile using the Phantom® ceiling tile mount. This creates a robust, unobtrusive looking wireless network. No more unsightly electric boxes hanging from the office walls. The Phantom® Elite™ antenna is the answer.



U.S. Patent Numbers 5,977,931 - 6,292,156 - Other patents pending.



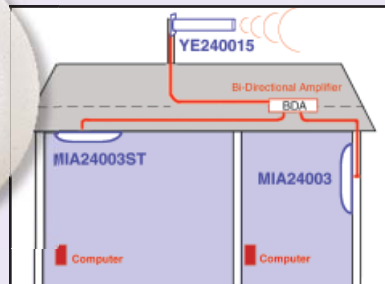
Enclosed Yagi
YE240015

Multiversity and point-to-point antennas provide multiple building solutions

The Multiversity antenna family features a ceiling or wall mount design. Connected to the Enclosed Yagi, the antennas make a powerful 2.4 GHz corporate or campus-wide wireless communications network.



Multiversity
MIA24003ST



Acoustic Ceiling
Installation
MIA24003ST



order online at www.antenex.com or call 800-323-3757

Complete Wi-Fi Solutions

Model	Description	Gain
-------	-------------	------

DESKTOP ANTENNAS

Phantom® Elite™ Wireless Range Extenders

ETRAB24003DTM	Desktop Version Black	3 dB MEG
ETRA24003DTM	Desktop Version White	3 dB MEG

WALL MOUNT ANTENNAS

Phantom® Elite™ Wireless Range Extender

ETRAB24003WM	Wall Mount Black	3 dB MEG
ETRA24003WM	Wall Mount White	3 dB MEG

CEILING MOUNT ANTENNAS

Phantom® Elite™ Wireless Range Extender

ETRA24003CM	Ceiling Mount White	3 dB MEG
-------------	---------------------	----------

Drop Ceiling Antenna Adaptors

TRADCA	No Ground Plane
TRADCAGP	With Ground Plane

DIRECTIONAL PANEL ANTENNAS

PNL24008	Directional Panel Antenna	8 dBi
PNL240012	Directional Panel Antenna	12 dBi
PNL240018	Directional Panel Antenna	18 dBi

FIXED ANTENNAS

Discadoo™

DISC2400PSM	Self Adhesive 2ft RG316 w/SMA
DISC2400PNSM	Self Adhesive 2ft RG316 w/SMA NGP

Phantom® Elite™

ETRA24003NP	White Permanent mt. No Ground Plane	3 dB MEG
ETRA24003P	White Permanent mount	3 dB MEG
ETRAB24003NP	Black Permanent mt. No Ground Plane	3 dB MEG
ETRAB24003P	Black Permanent mount	3 dB MEG

Omni Directional

FG24005	2.4-2.48 Fiberglass	5 dBi
FG24008	2.4-2.48 Fiberglass	8 dBi

Enclosed Yagi

YE240015	Enclosed Yagi antenna	15 dBi
----------	-----------------------	--------

MOBILE ANTENNAS

NMO Phantom® Elite™ Antennas

ETRA24003	White Antenna NMO mount	3 dB MEG
ETRA24003N	White No Ground Plane NMO mount	3 dB MEG
ETRAB24003	Black Antenna NMO mount	3 dB MEG
ETRAB24003N	Black No Ground Plane NMO mount	3 dB MEG

MULTIVERSITY ANTENNAS

MIA24003	2.4-2.5	Wall mount	3 dB-MEG*
MIA24003ST	2.4-2.5	Ceiling mount	3 dB-MEG*

PORTABLE ANTENNAS

DEXC2400SM	4" w/SMA	Unity
DEXE2400TNX	8" w/ TNX	2.5 dB
DWXR2400TN	Right Angle 8" w/TNC	2.5 dB

Many other portable options available, please call

INSTALLATION ACCESSORIES

FM2	Fiberglass Mounting Bracket (2)
LABH2400NN	Bulkhead Lightning Arrestor
IASFST	36 ft. Roll of MOCAP Installation Tape
IASFST10	Six pack of 10" strips of MOCAP Installation Tape

Items printed in green are in-stock and available for immediate delivery



PNL240018



PNL240012

Panel Antennas



Discadoo™
DISC2400PNSM



PNL24008



Phantom® Elite™
ETRA24003P



Phantom® Elite™
ETRAB24003



FG24005



FG24008

Fiberglass Omnis

Lightning Arrestor
LABH2400NN



order online at www.antenex.com or call 800-323-3757



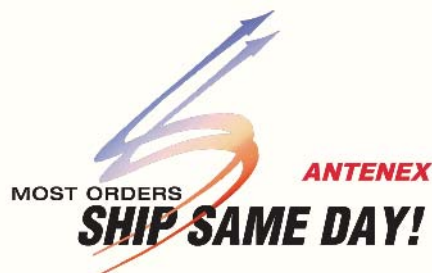
Antenex Wi-Fi Solutions

Exclusive Technology Superior Performance Built to Last



Antenex 2.4 GHz panel antennas deliver focused coverage, greater distance and increased flexibility for your wireless local area network. All 2400 series are high gain directional antennas providing extended coverage area for existing 802.11 B or G wireless local area network (WLAN) and are compatible with most Enterprise Class Access Points.

Why aren't you choosing Panel antennas from Antenex?



COPYRIGHT © ANTENEX® MMV All Rights Reserved.

 **ANTENEX** INC.
2000 - 205 Bloomingdale Road • Glendale Heights, Illinois 60139 U.S.A.

PRSR STD
U.S. Postage
PAID
Bloomingdale, IL
Permit 24

Visit www.antenex.com or call 800-323-3757

Local: 630-351-9007 • Fax: 630-351-9009 • Technical: 630-351-9011