



The BradCommunications™ Direct-Link™ network adapters provide simple use and fast implementation in connecting notebook or desktop computers with Profibus protocols up to 12 Mbps.

Direct-Link™ USB100PFB

Easy-to-Use solution

Features

- RoHS compliant
- Ready to plug, no hardware setting
- High Speed USB Adapter v2.0 & v1.1
- Profibus protocols managed simultaneously:
 - Profibus DP-V0 Master/Slave
 - Profibus DP-V1 Master/Slave
 - S7/MPI Master for Simatic® S7 -300 and S7-400
 - S7/MPI Slave for Simatic® S7-200
 - S5 for Simatic® S5 (95U, 115U, 135U, 155U)
- Profibus speed: 9.6kbps ↔12Mbps
- Software Interfaces:
 - OPC Server (Data Access v1.0a, v2.05 and 3.0)
 - Wonderware DAServer
 - Wonderware I/O Server (SuiteLink, FastDDE)
 - ActiveX Control
 - DLL library 32-bits

Supported OS

- Windows XP / 2000 / 2003 Server



Woodhead is a member of PTO (PROFIBUS Trade Organization), PNO (PROFIBUS Nutzerorganisation e. V.) and France Profibus.



RoHS

USB 2.0 and 1.1



DLL

Overview

BradCommunications™ Direct-Link™ is a range of automation components for industrial communication. It includes a variety of products such as diagnostic tools, intelligent connectors, tunneling gateways, dedicated fieldbus cards, and software drivers for industrial networks.

Simple as they are affordable, Direct-Link™ products allow you to acquire the equipment to develop your architectures and industrial applications at a lower cost.

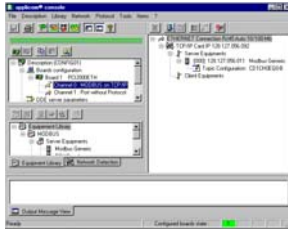
Direct-Link™ is characterized by its simple use and fast implementation. The solutions are modular and scalable. Moreover, the products are designed to be easily embedded in computerized systems and are available in a wide selection of form factors.

Particularly, BradCommunications™ Direct-Link™ products are based on a non-intelligent 12 Mbps USB adapters that are especially designed to communicate with Siemens controllers and others compatibles devices set on a Profibus network. Direct-Link™ suits perfectly to applications requiring few CPU resources (for more powerful data through and large application, see applicom® product ranges).

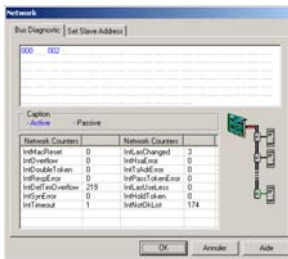


Software tools

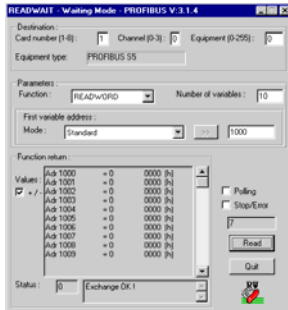
The core of Direct-Link™ PC Network Interfaces lies in effective software tools enabling fast integration of industrial communication into your applications.



Configuration



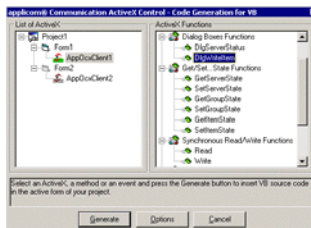
Diagnostics



Testing Tools



OPC Browser



ActiveX Control

Technical data

Hardware	
Unit	High-speed USB Adapter Version 2.0 or 1.1 Full speed and High Speed with automatic recognition
Processor	USB : ARM 7, Philips LPC2212 Profibus : 186 core, 48 MHz
Dimensions (L x W x H)	56 x 33 x 93mm (2.20" x 1.29" x 3.66"), Aluminium box
Power supply	5V through USB (no external supply required)
Consumption	350 mA
USB connector	USB Port Type: Mini-B USB Cable A/Mini-B (included in the package)
Operating Temperature	0°C up to +55°C
Storage Temperature	-20°C up to +70°C
RoHS	Yes
Humidity	5 to 95% non condensing
EMC Compliance	EN55022 Class B
Supported Protocols	
Protocol	<ul style="list-style-type: none"> S7/MPI Master - Siemens S7-300, S7-400 S7/MPI Slave - Siemens S7-200 DP-V0 Master/Slave Class-1 & Class-2 DP-V1 Master Class-1 & Class-2 S5 Client
Profibus port	
Port type	Profibus port (EN 50170)
Connector type	9 pin, D-sub, female
Electrical Interface	RS485 with galvanic insulation 500 V
Speed	9600 bps to 12 Mbps
LED indicators	2 bicolor leds: Bus fault, Communication status

Ordering information

Part Number	Description
DRL-MPI-USB	BradCommunications™ Direct-Link™ High-Speed USB Adapter for MPI/S7, PROFIBUS® up to 12 Mb, All Data Servers (OPC, Wonderware™, ActiveX™) and DLL Library
DRL-MPI-USB-DLL	BradCommunications™ Direct-Link™ High-Speed USB Adapter for MPI/S7, PROFIBUS® up to 12 Mb, DLL Library only – Available Jan. 07
DRL-PFB-USB	BradCommunications™ Direct-Link™ High-Speed USB Adapter for Full PROFIBUS® (DP, S5, S7/MPI), Profibus up to 12 Mb, All Data Servers (OPC, Wonderware™, ActiveX™) and DLL Library – Available Jan. 07
DRL-PFB-USB-DLL	BradCommunications™ Direct-Link™ High-Speed USB Adapter for Full PROFIBUS® (DP, S5, S7/MPI), Profibus up to 12 Mb, DLL Library only – Available Jan. 07
DRL-UPS-USB	Upgrade license from DLL Library only → All Data Servers (OPC, Wonderware™, ActiveX™) and DLL Library – Available Jan. 07